

IF.

BE Architecture  
Design  
The Arts

## WHAT IS IFBE?

---

IF.BE is a laboratory of and for exploration. For transdisciplinary work across the extant and the novel in **architecture, design, and the arts.**

It is a meeting point for collaboration and interaction between **designers & architects, citizens and government agencies** that are determining the future of urban development.

## IFBE

**I**CE **F**ACTORY **B**ALLARD **E**STATE



The acronym IFBE was coined to pay homage to its location's rich heritage; it also alludes to the independent towards '**IF**' [a suggestion of endless possibilities. '**IF**' denotes a sense of hope.] and '**BE**' [the counter balance that allows (re)solutions and revisions].

INTRODUCING OUR PARTNER



**IF.**  
**BE** Architecture  
Design  
The Arts

CULINARY EXPERIENCES  
**SOULINAIRE**

## THE VISION

---

IF.BE is a place to pause, reflect, and resonate; a repository of ideas, intent, and action. It aims to consciously become a backdrop where minds come together to engage on challenges and chances, on advocacy and alternatives; where creativity dovetails with concern.

IF.BE seeks to be the plinth that pulls people from Architecture, Design, and the Arts to meet with the community. To work towards unwiring and rewiring their responses and contributions to ever-evolving cultural narratives, local and global.

## THE MISSION

---

### **TO ENABLE**

the active unlearning of dated ways of viewing and experiencing the world.

### **TO CONNECT**

with those who are propagating design as a potent force for meaningful change.

### **TO CELEBRATE**

exemplars in the realm of conservation, re-use, and regenerative design.

### **TO COLLABORATE**

with urban communities. To engage private and public institutions towards realising the vision of the collective.

### **TO PROVIDE**

a space for architects, designers, civic agencies, and citizens to collaborate. For a richer, more inclusive urban fabric for Mumbai.

### **TO INSPIRE**

the revitalization of the built and unbuilt heritage of Mumbai's port area.

**Dear Patron,**

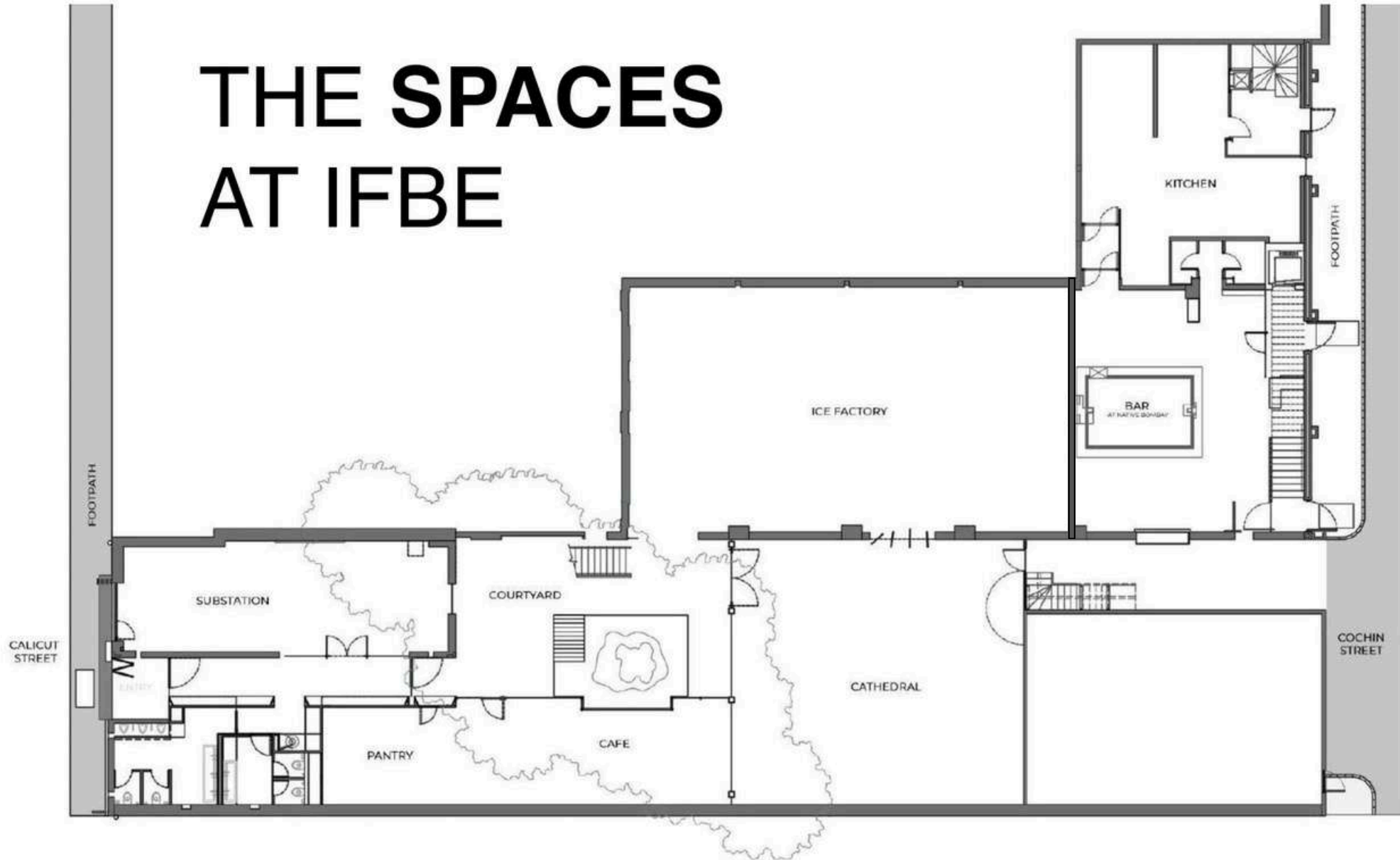
**Though nothing comes close to visiting IFBE in person, we have put this guide together to serve as a small glimpse into our spaces.**

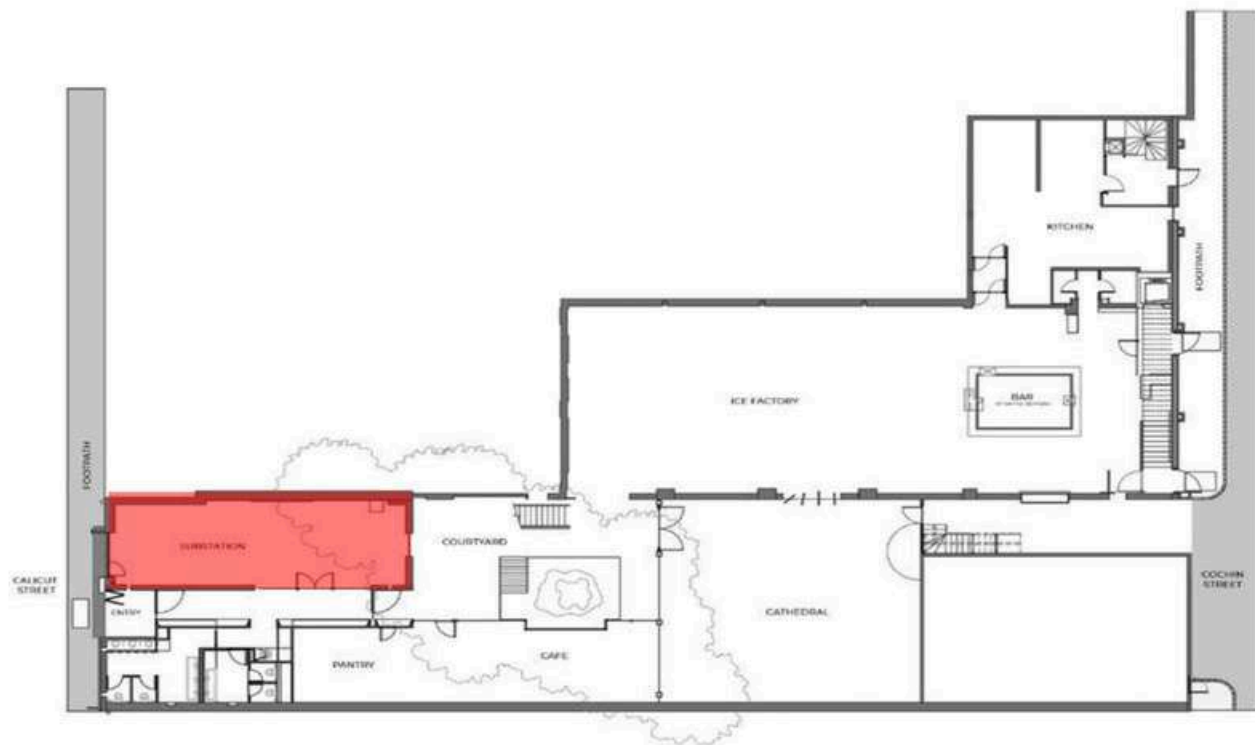
The IFBE precinct as a whole is meticulously stitched together with a contemporary approach. IFBE brings to the city of Mumbai volumes washed in natural light around the day through magnificent roofs, unique to each one.

Steeped in character, with a profound sense of history, each of these contemporary spaces has been designed to be fluid and can be easily configured depending on the nature of the event. IFBE offers you three distinct spaces for your next event– from an intimate poetry reading to an exclusive product launch.

**So, allow this guide to take you through the Spaces at IFBE**

# THE SPACES AT IFBE





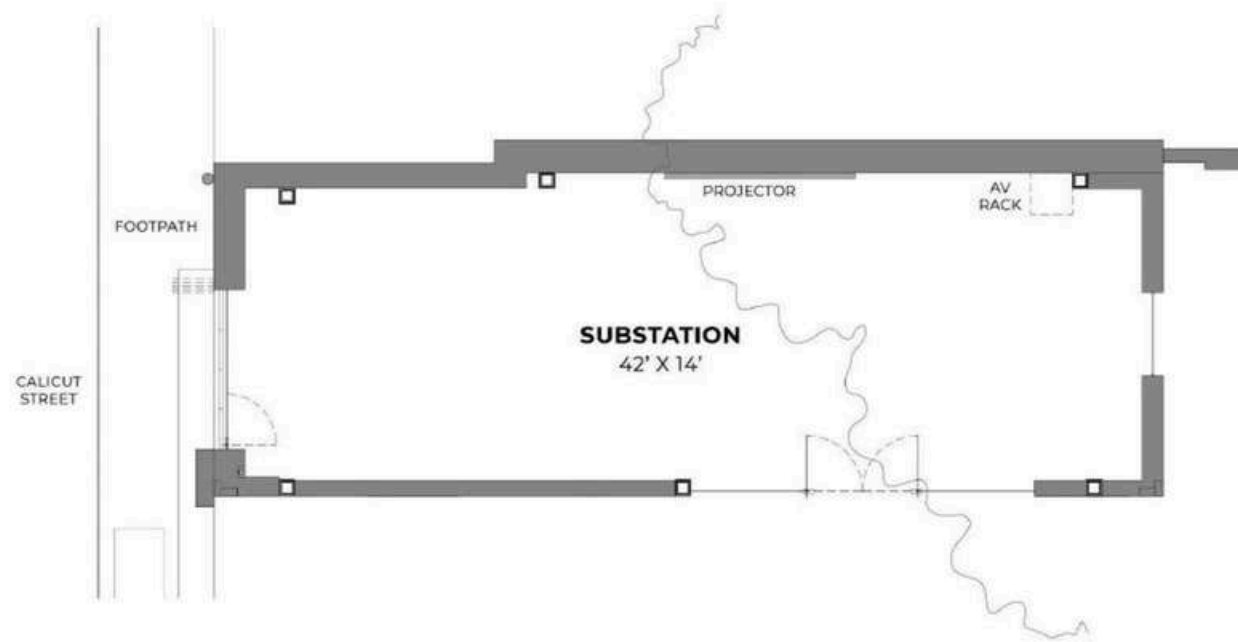
# 01

THE SPACES

## THE SUBSTATION

### ABOUT

Abutting Calicut Street, the old substation has been faithfully and innovatively restored and forms a visual gateway to the central court, the Cathedral, and on through to Cochin street. The gabled roof not only allows diffused light to filter into this space but also reveals views of the landmark chimney. The gateway to IFBE, the Substation is the perfect space for a smaller display or to introduce a larger exhibition inside.



## SPACE PURPOSE

- 01.** Pre-event Space
- 02.** Small Displays
- 03.** Recordings
- 04.** Pop-up Shops

## SPACES

# SPECIFICATIONS

AREA: 580 sq ft

MAX USABLE HEIGHT: 10 ft 6 in

STANDING ROOM: About 45

## OUTLET COUNT

Total Electrical Outlets: 24 Outlets

Total HDMI Outlets: 1 Ports

Floor Switchboards	2 Locations Around Room	2×4 = 8 Outlets
15 Amp Wall Outlets	2 Locations Around Room 1 Located Under Projector*	2×2 + 1* = 5 Outlets
HDMI Ports	1 Under Each Projector 1 in Service Rack	2 Outlets

# EQUIPMENTS

## VIDEO

- 1 BenQ Short Throw Projector
- Screen Size: 120 inches (diagonal)
- Aspect Ratio: 16:9
- HDMI Input (underneath projector, AV Rack)

## LIGHTING

- Built-in Adjustable Dimmable Track Lighting
- (Warm Colour Temperature)

## AUDIO

- Built-in Speaker/PA system
- Lapel Mic Available

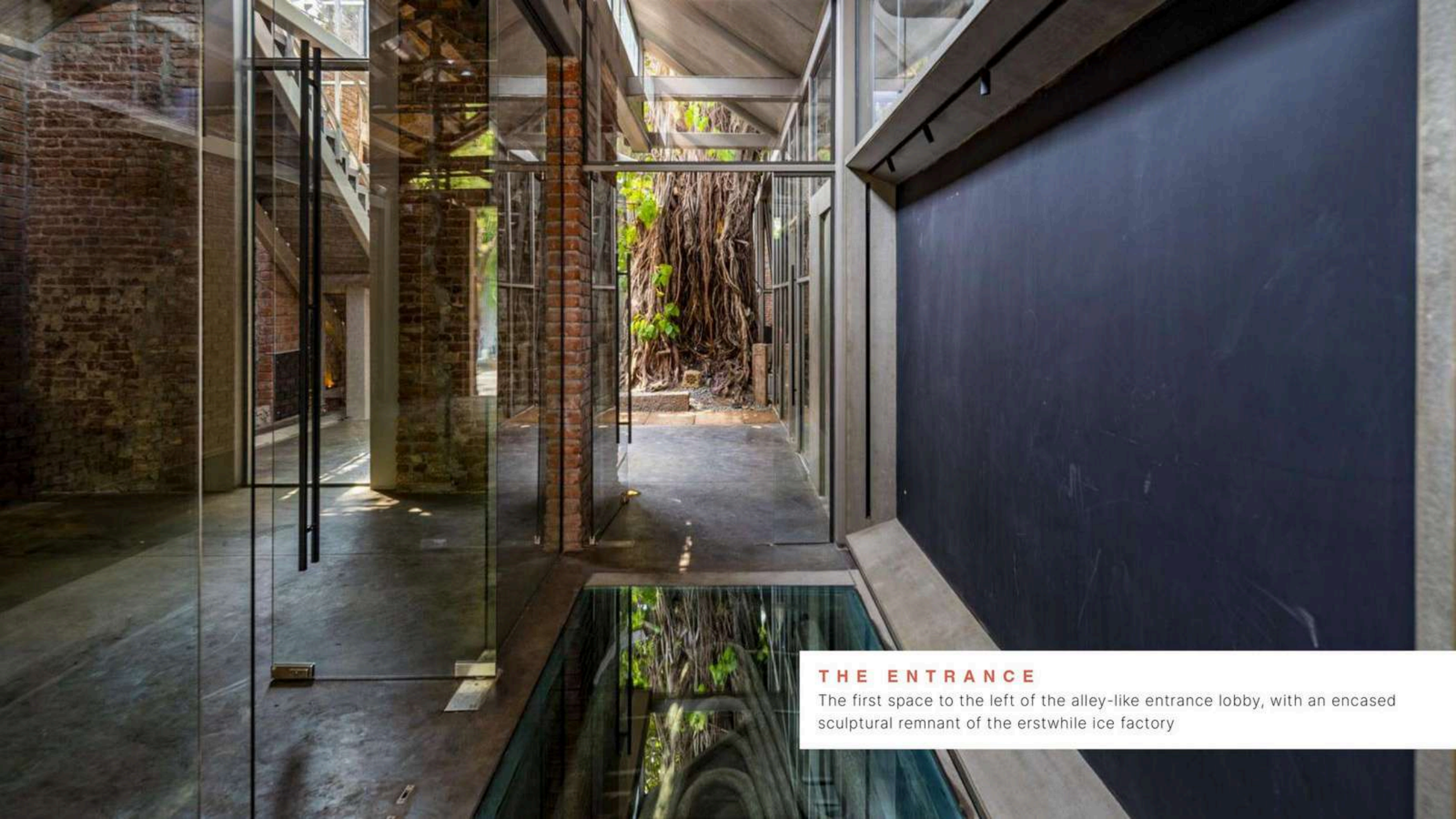
## BUILT-IN FLOOR AND WALL OUTLETS

## WI-FI SERVICE



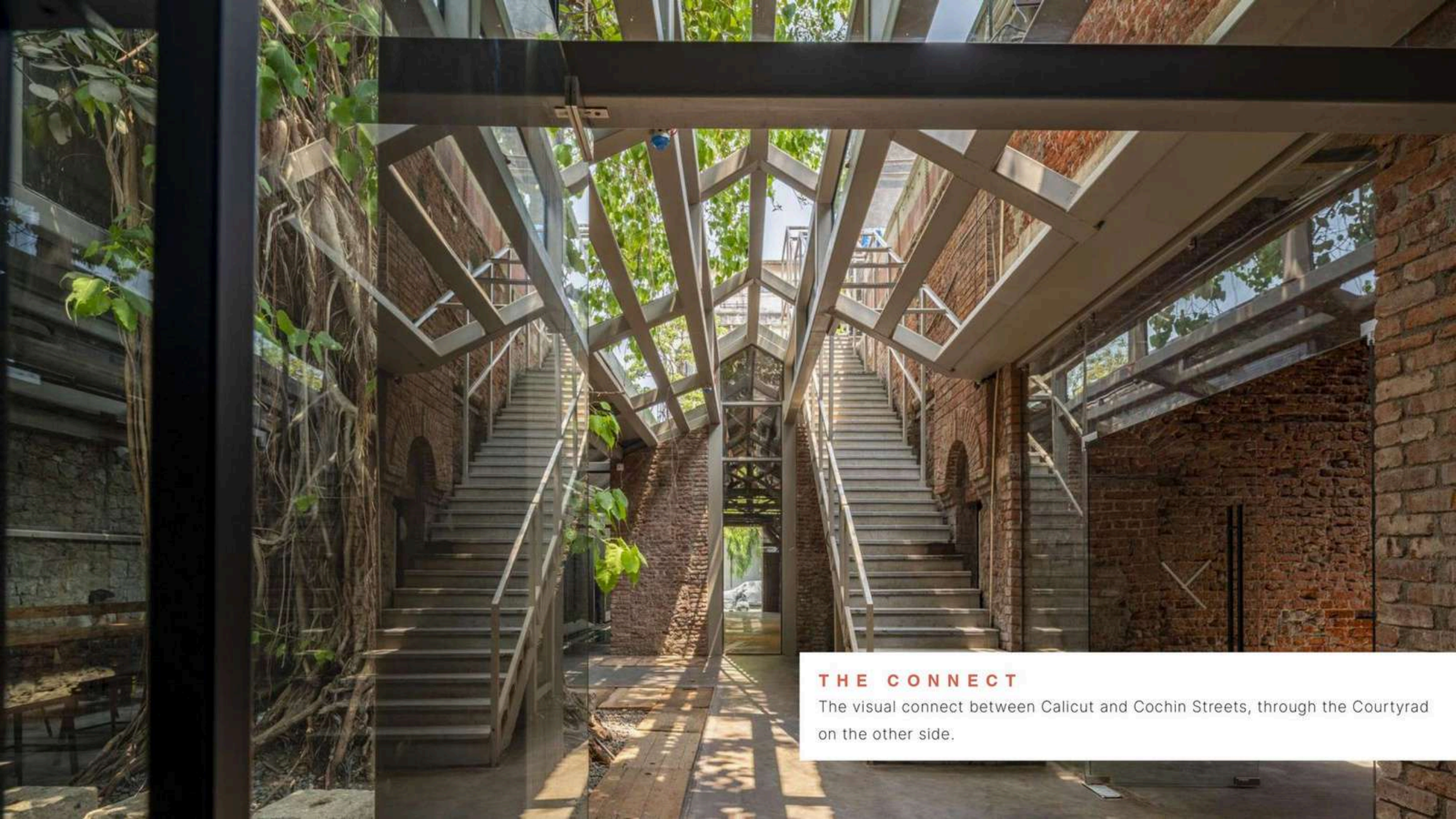
## THE APPROACH

Independent street access from the French wooden doors.



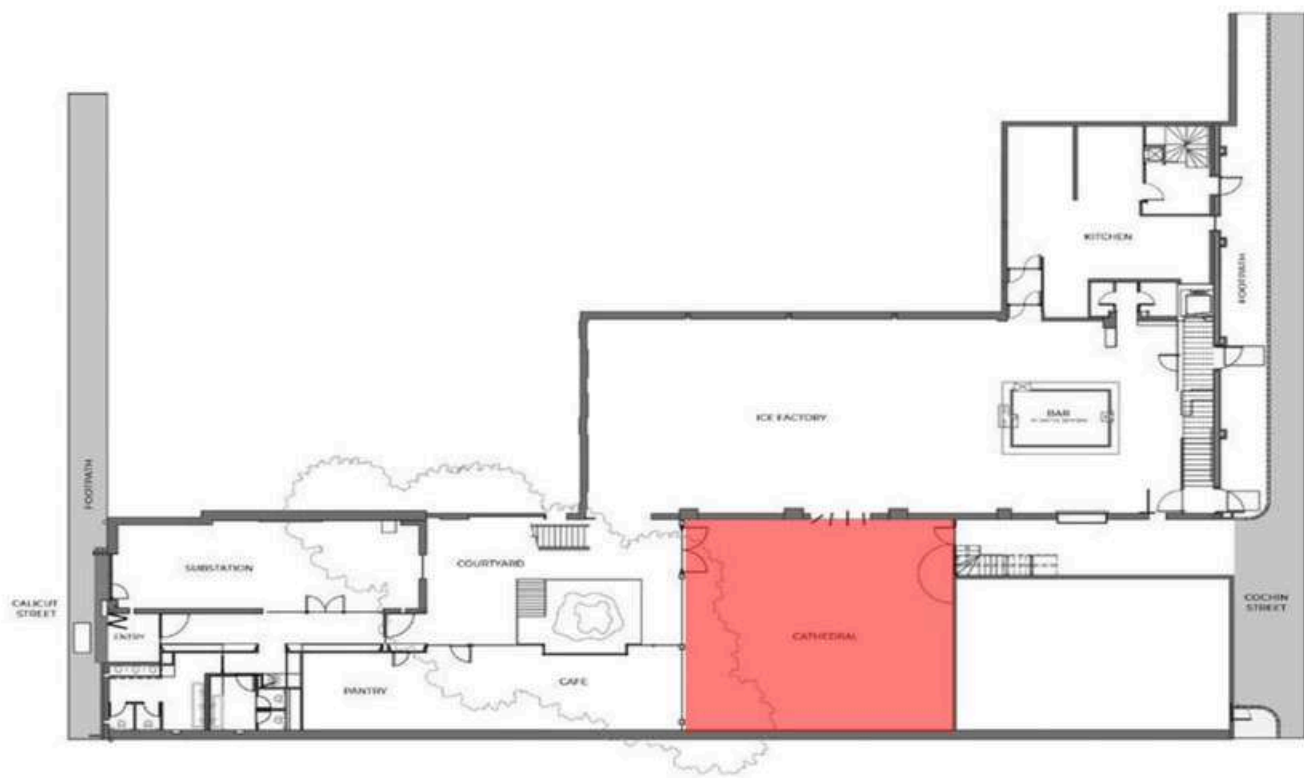
## THE ENTRANCE

The first space to the left of the alley-like entrance lobby, with an encased sculptural remnant of the erstwhile ice factory



## THE CONNECT

The visual connect between Calicut and Cochin Streets, through the Courtyrad on the other side.



# 02

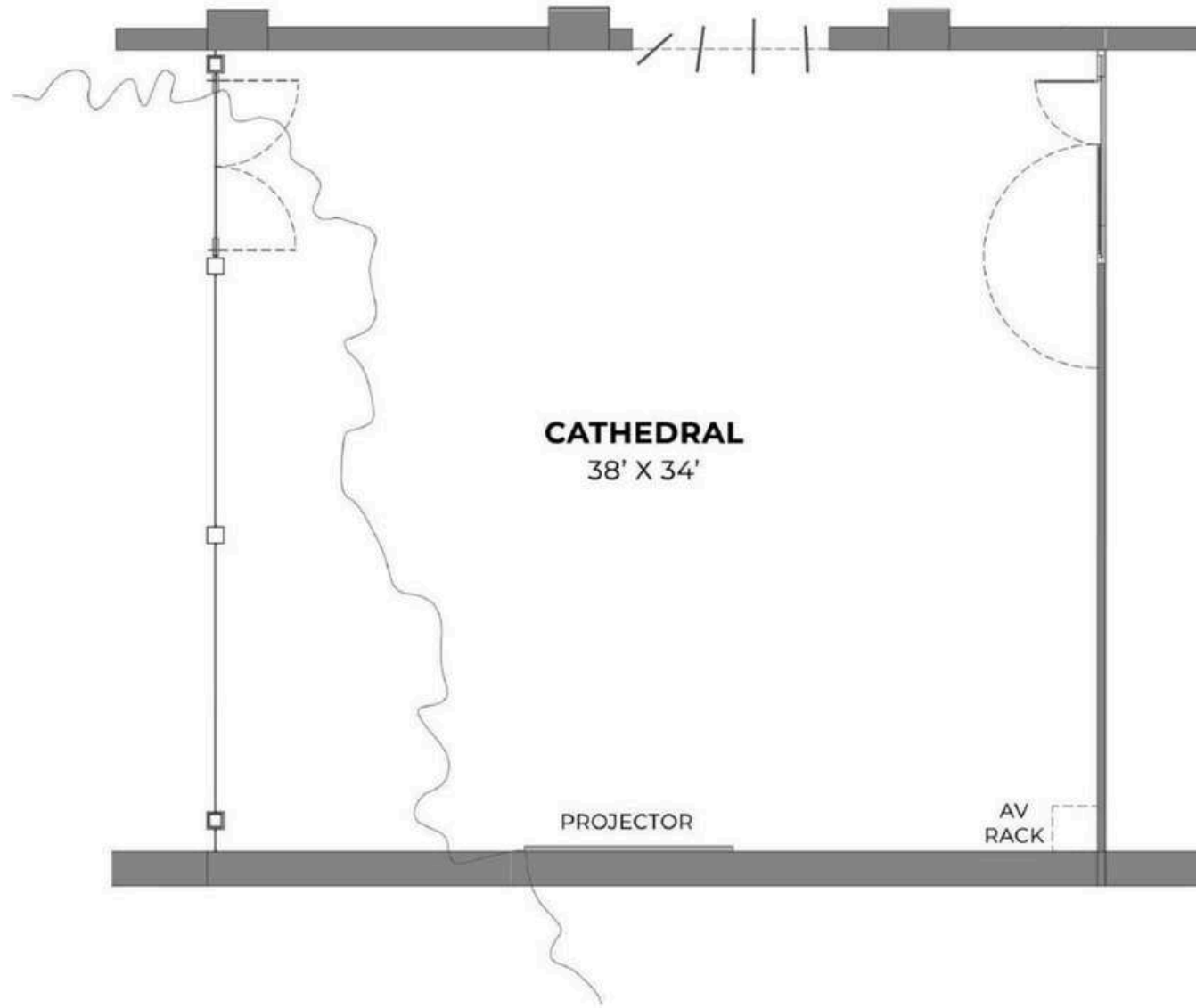
## THE SPACES

### THE CATHEDRAL

Open, Grand, and voluminous.

In a city that often feels claustrophobic and cramped, the soaring Cathedral is a celebration of space, light, and air. It is a contemporary extrusion of the North light-lit ice factory morphing into East light as a response to adjacent structures. The site's second-largest exhibition space, the Cathedral is in constant conversation with, and overlooks, the banyan tree and central courtyard.

The Cathedral connects to the Ice Factory, making it suitable for a larger event as well.



## SPACE PURPOSE

- 01.** Exhibitions.
- 02.** Performances
- 03.** Product
- 04.** Launches
- 05.** Workshops

## SPACES

# SPECIFICATIONS

AREA: 1,320 sq ft

MAX USABLE HEIGHT: 16 ft (along brick wall), 11 ft 6 in (along stone wall)

STANDING ROOM: About 65

## OUTLET COUNT

Total Electrical Outlets: 24 Outlets

Total HDMI Outlets: 1 Ports

Floor Switchboards	6 Locations Around Room	6×4 = 24 Outlets
15 Amp Wall Outlets	None	None
HDMI Ports	1 in Service Rack	1 Outlets

# EQUIPMENTS

## VIDEO

- 1 BenQ Short Throw Projector
- Screen Size: 120 inches (diagonal)
- Aspect Ratio: 16:9
- HDMI Input (underneath projector, AV Rack)

## LIGHTING

- Built-in Adjustable Dimmable Track Lighting
- (Warm Colour Temperature)

## AUDIO

- Built-in Speaker/PA system
- Lapel Mic Available

## BUILT-IN FLOOR AND WALL OUTLETS

## WI-FI SERVICE



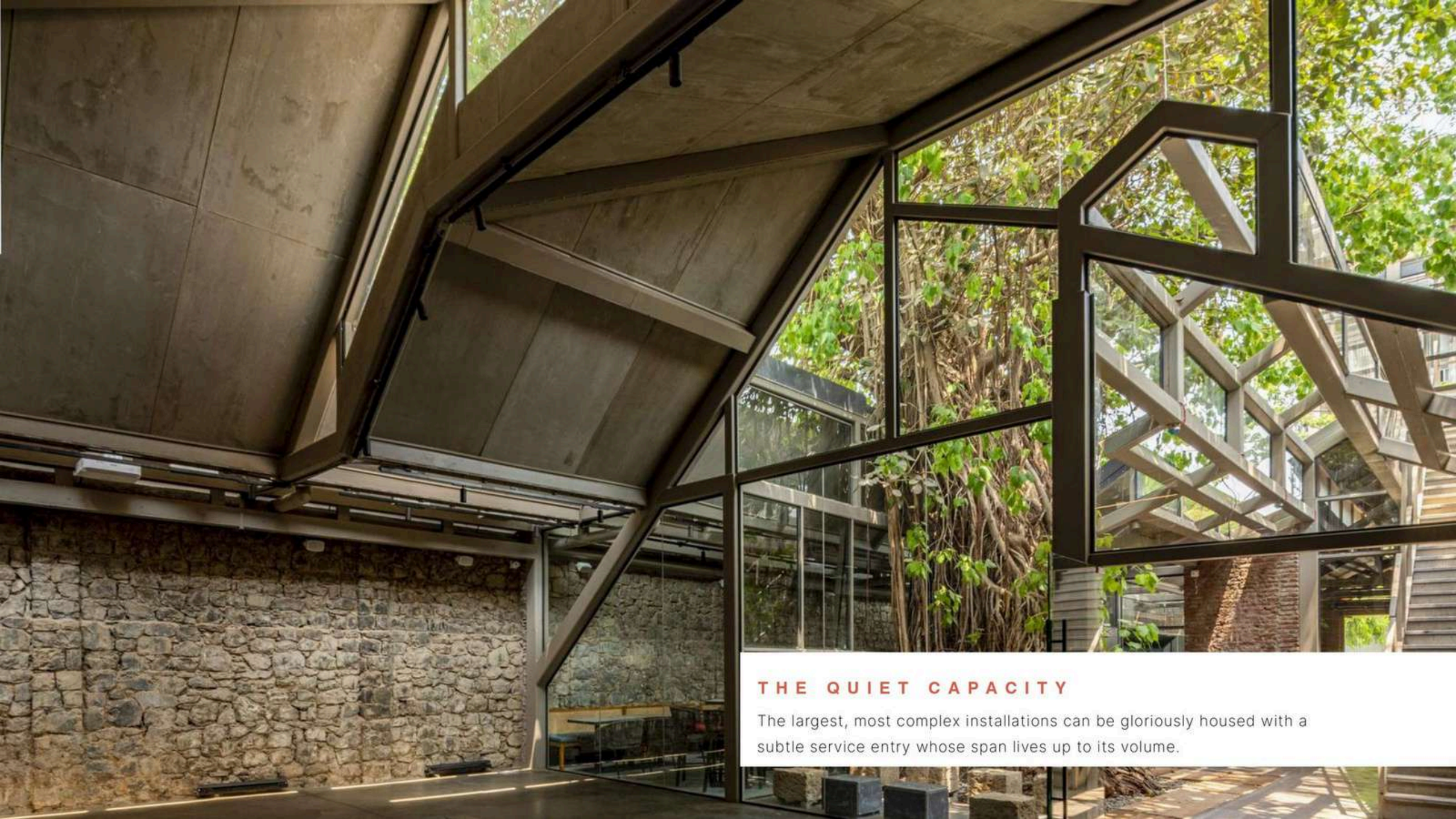
## THE CATHEDRAL

The space is shared by the lush foliage of the Banyan tree, rightly admired to be the most soulful presence in this precinct.



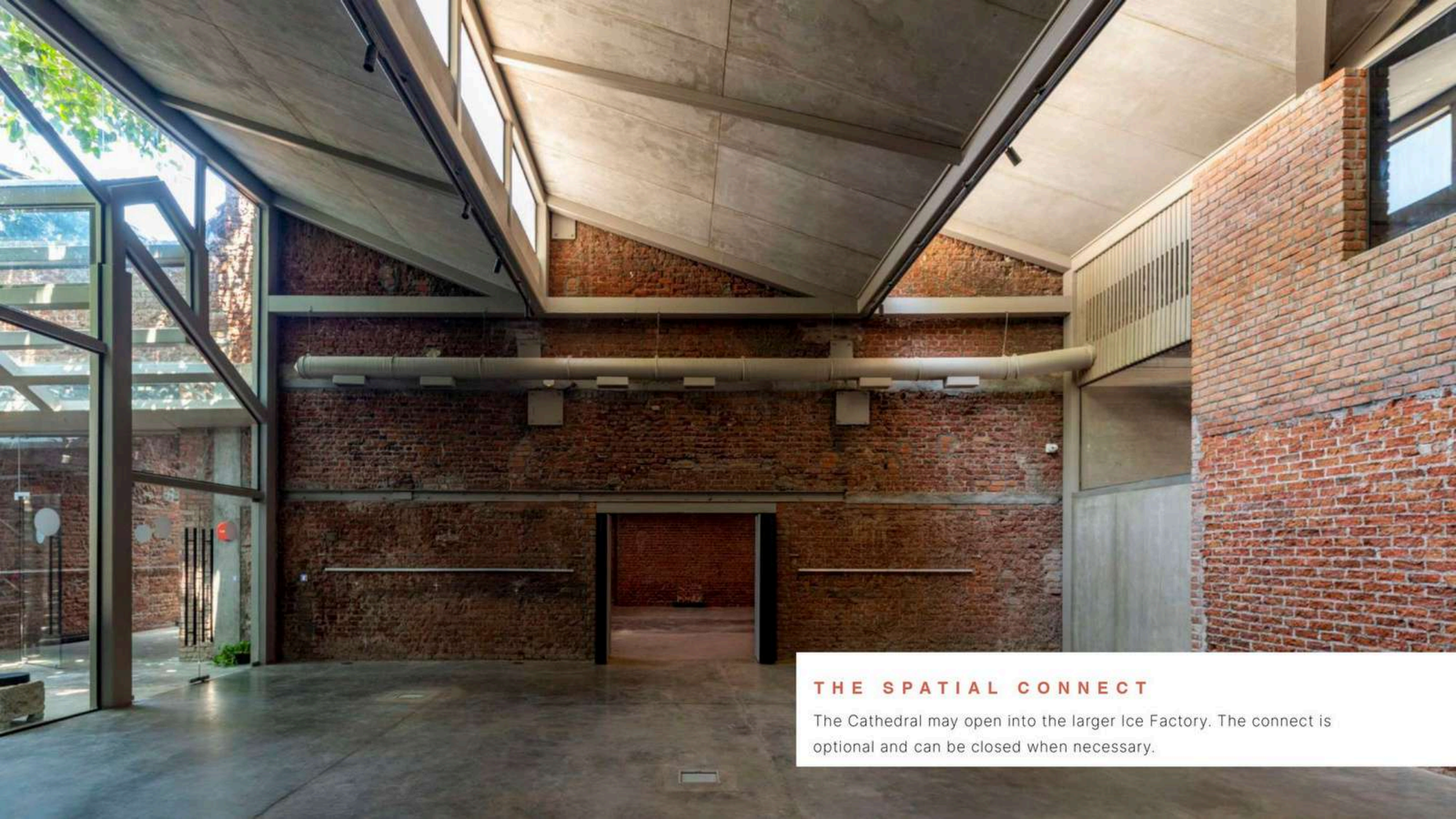
## THE CONTEMPORARY CUT

The sculpted geometry of the roof is what makes this Cathedral as stunning as it is unorthodox.



## THE QUIET CAPACITY

The largest, most complex installations can be gloriously housed with a subtle service entry whose span lives up to its volume.



## THE SPATIAL CONNECT

The Cathedral may open into the larger Ice Factory. The connect is optional and can be closed when necessary.

# 03

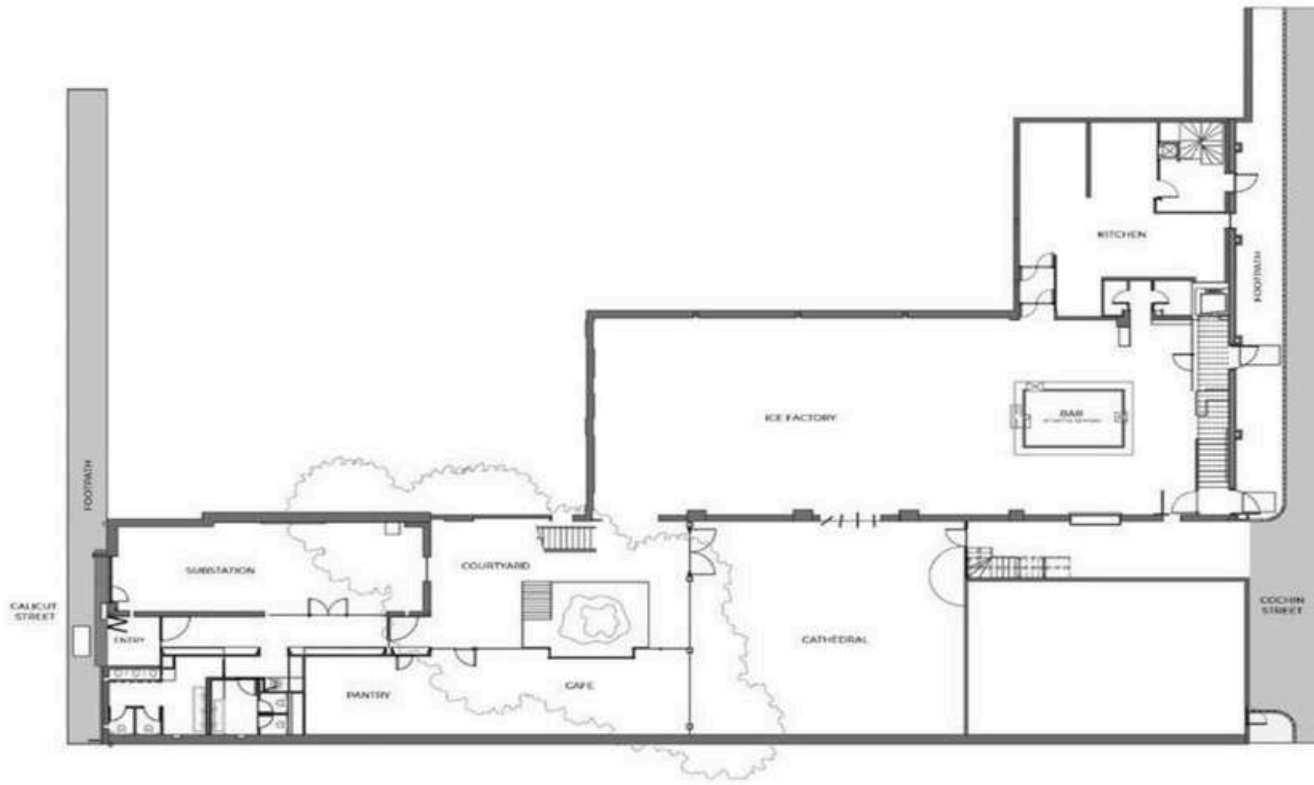
## THE SPACES

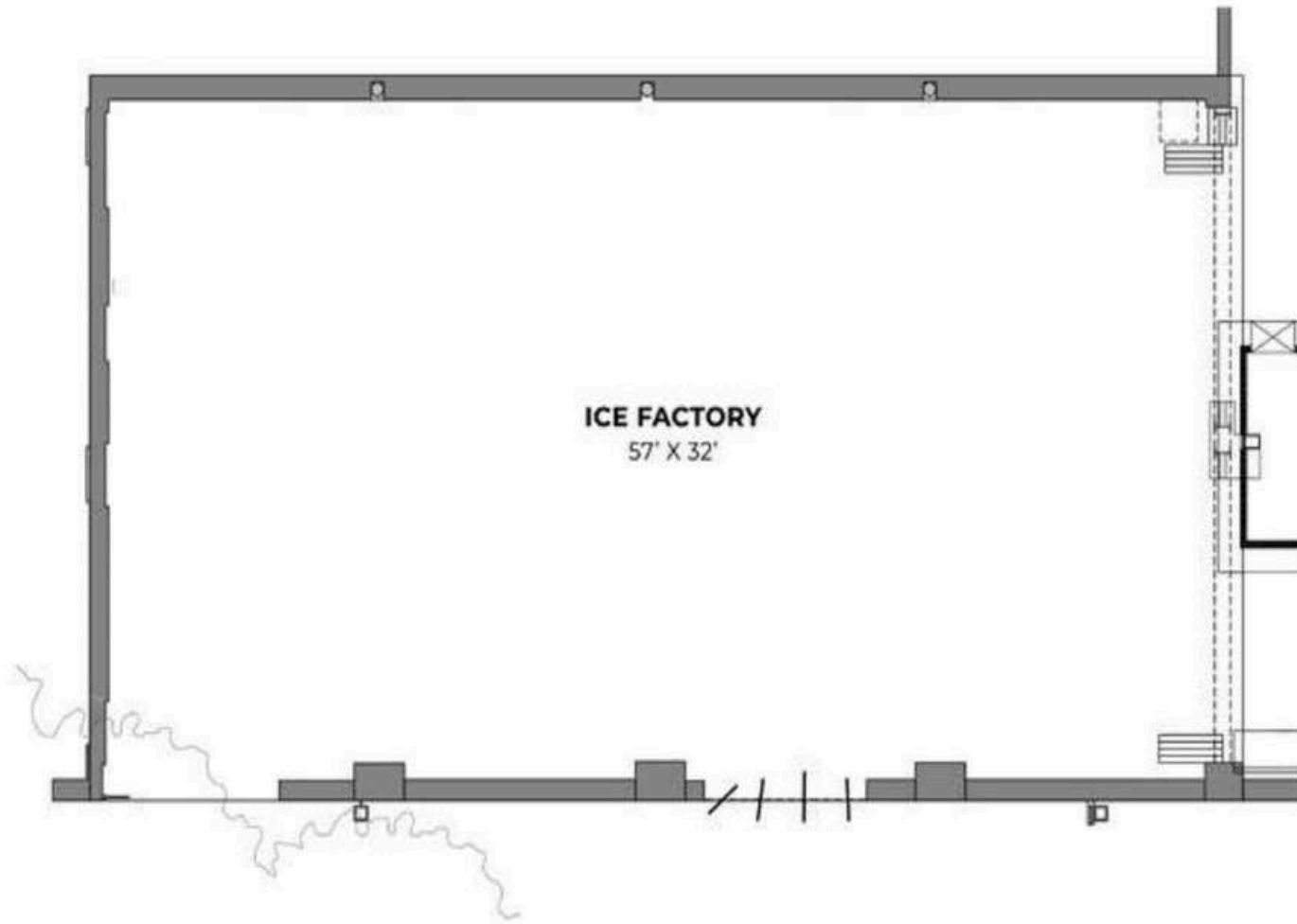
### THE ICE FACTORY

Made ice for over a century; this industrial site's beating heart.

Soaring to a height of 22 feet, is the beating heart of this complex that was built over a century ago and is now IFBE. Entirely column-free, the Ice Factory is that rare expansive and meditative space in the midst of the city's hustle and bustle.

Natural light filters through the North light trusses expressing the movement of the sun through the day. At night, the original Burma Teak trusses and roof panels are accentuated through the use of precision lighting and optics. The gantry used to lift the ice blocks is operational and can be used innovatively both for the partitioning of the space as well as to create dynamic art and installations





## SPACE PURPOSE

- 01.** Exhibitions.
- 02.** Performances
- 03.** Film
- 04.** Screening
- 05.** Panel Discussions
- 06.** Interactive Sessions
- 07.** Workshops

## SPACES

# SPECIFICATIONS

AREA: 1,770 sq ft

MAX USABLE HEIGHT: 14 ft.

STANDING ROOM: About 180

## OUTLET COUNT

Total Electrical Outlets:  $24+18=$  42 Outlets

Total HDMI Outlets: 4 Ports

Floor Switchboards	6 Locations Around Room	$6 \times 4 = 24$ Outlets
15 Amp Wall Outlets	8 Locations Around the Room 2 Located Under Projector*	$8 \times 2 = 16$ Outlets
HDMI Ports	2 Under Each Projector 2 in Service Rack	4 Outlets

# EQUIPMENT

## VIDEO

- 1 BenQ Short Throw Projector
- Screen Size: 120 inches (diagonal)
- Aspect Ratio: 16:9
- HDMI Input (underneath projector, AV Rack)

## LIGHTING

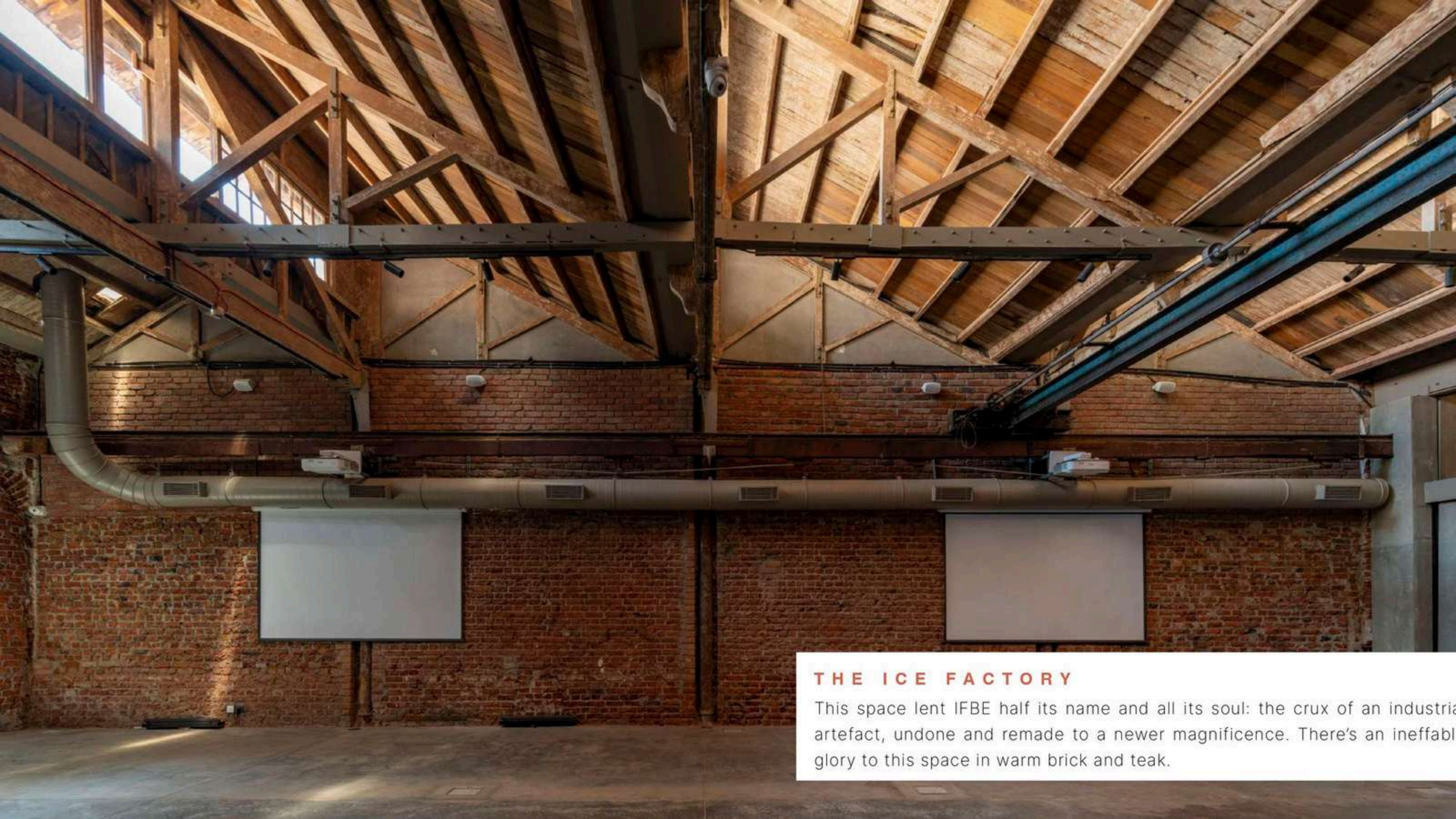
- Built-in Adjustable Dimmable Track Lighting
- (Warm Colour Temperature)

## AUDIO

- Built-in Speaker/PA system
- Lapel Mic Available

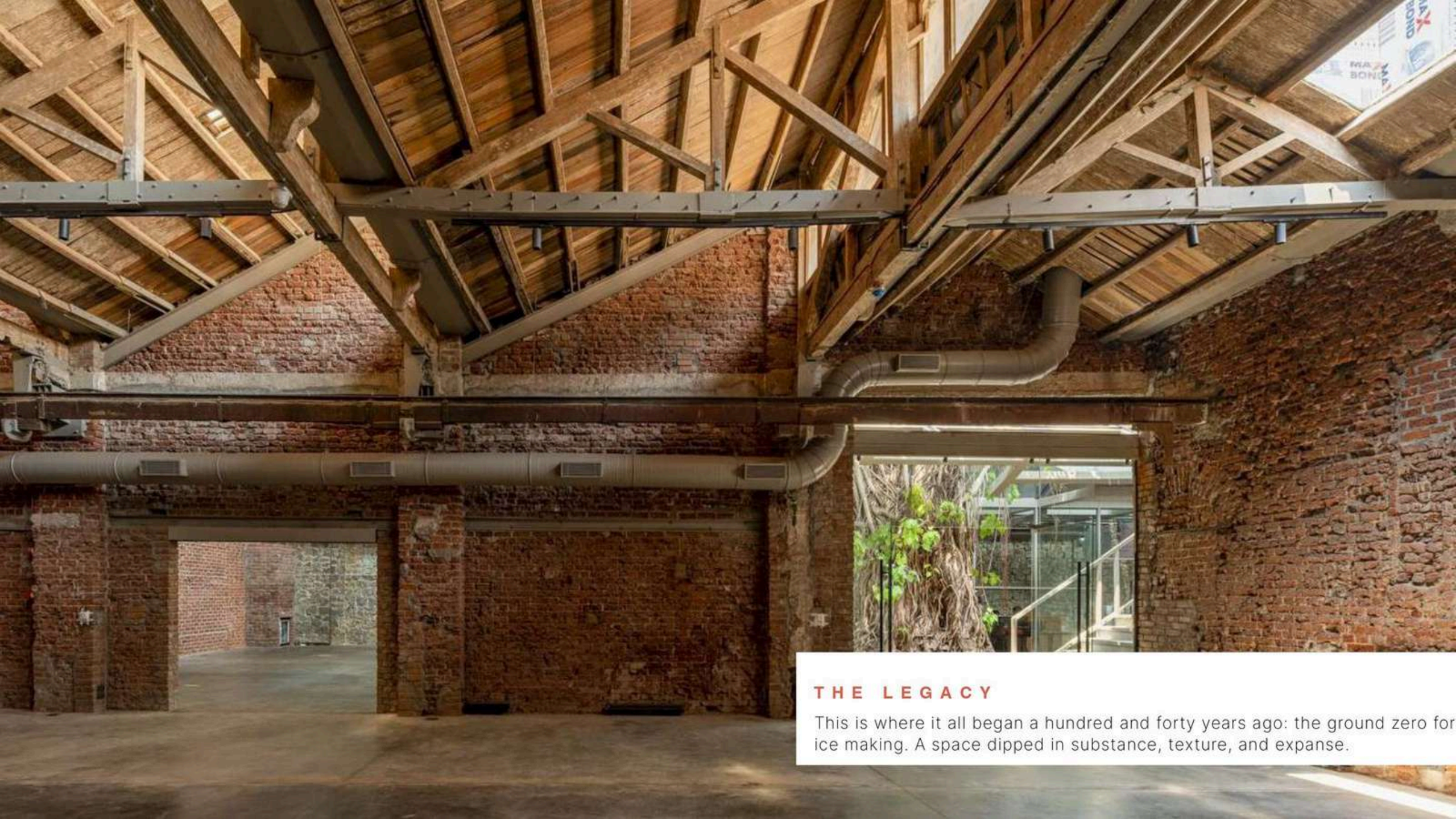
## BUILT-IN FLOOR AND WALL OUTLETS

## WI-FI SERVICE



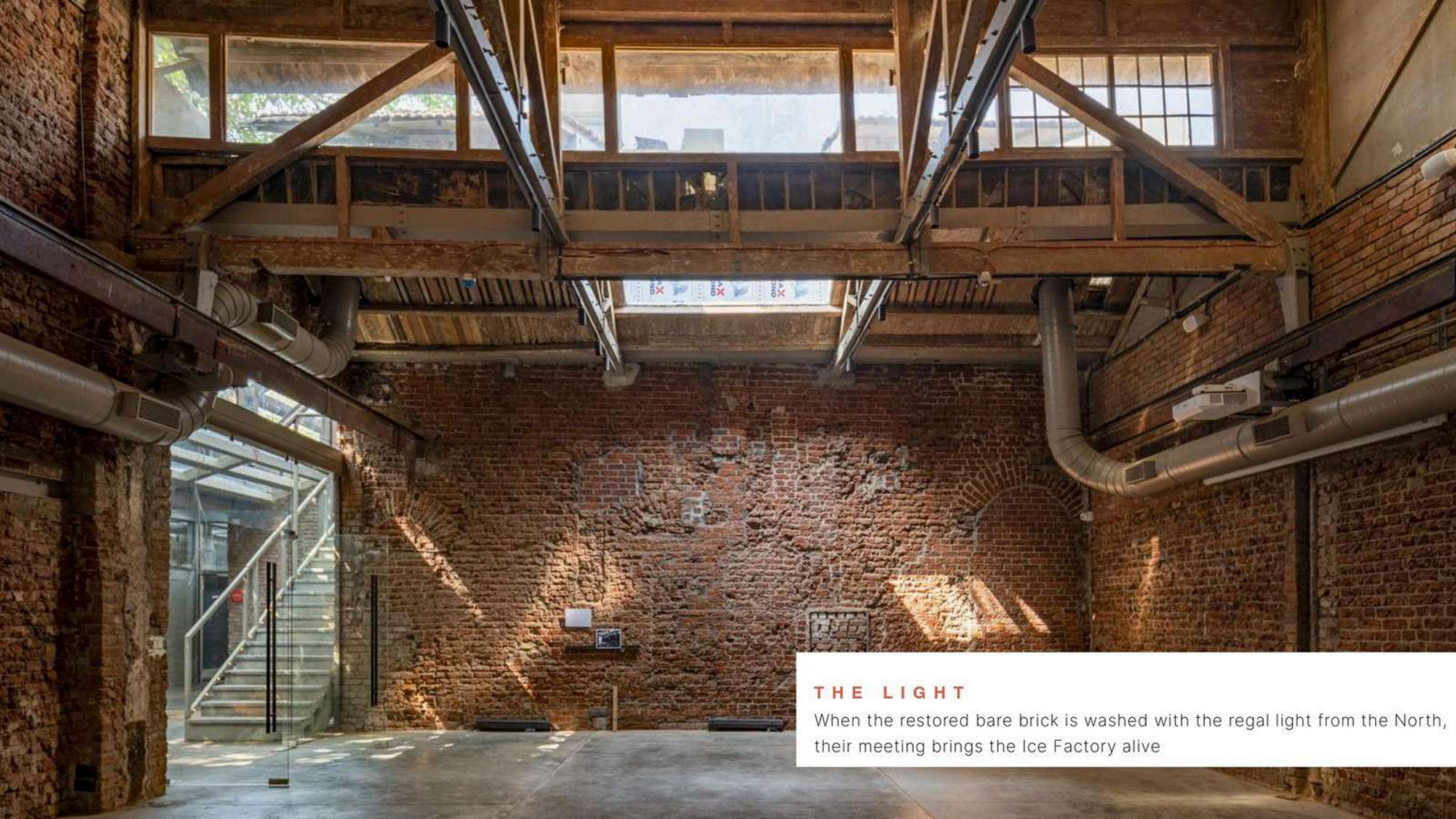
## THE ICE FACTORY

This space lent IFBE half its name and all its soul: the crux of an industrial artefact, undone and remade to a newer magnificence. There's an ineffable glory to this space in warm brick and teak.



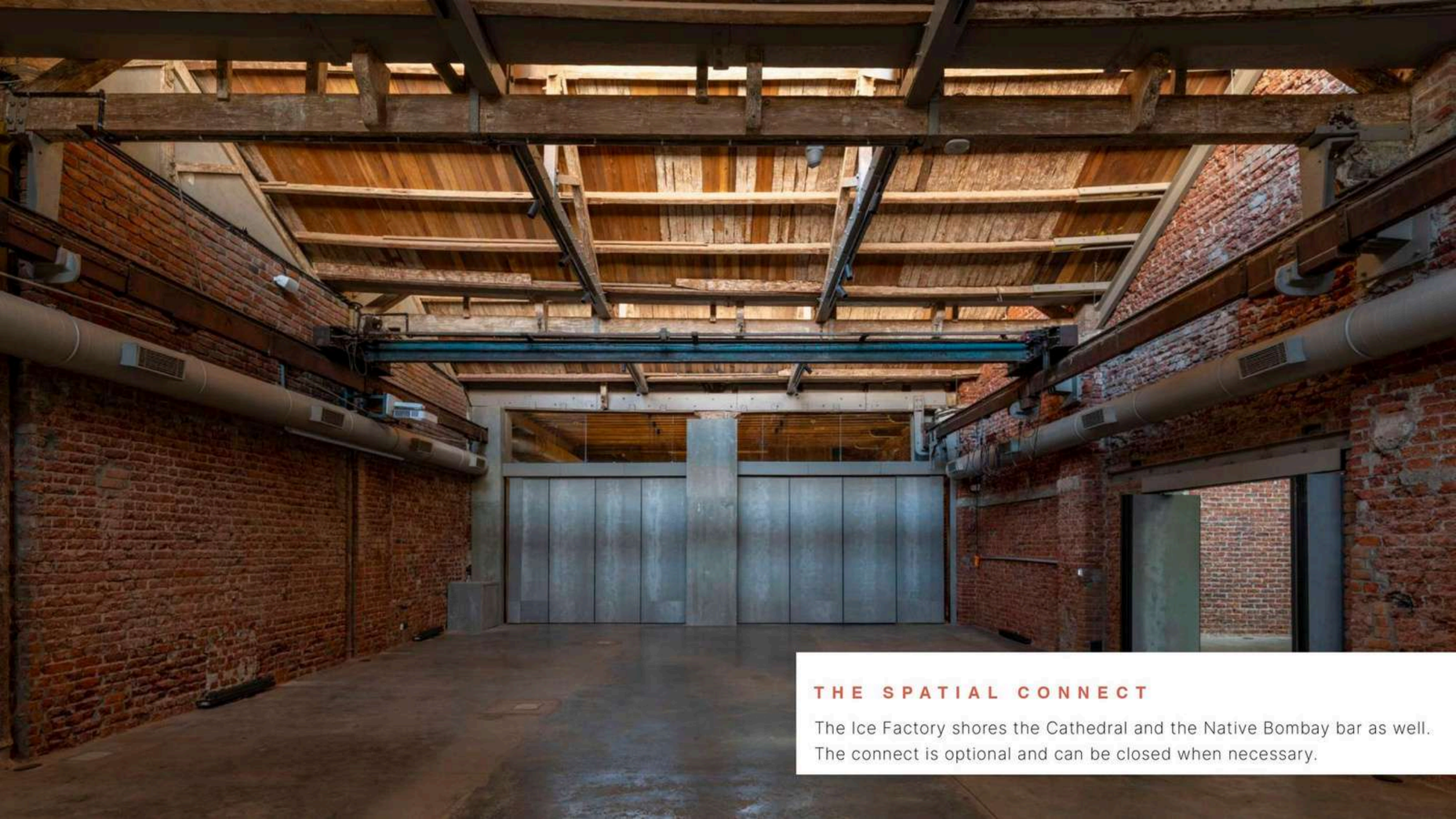
## THE LEGACY

This is where it all began a hundred and forty years ago: the ground zero for ice making. A space dipped in substance, texture, and expanse.



## THE LIGHT

When the restored bare brick is washed with the regal light from the North, their meeting brings the Ice Factory alive



## THE SPATIAL CONNECT

The Ice Factory shores the Cathedral and the Native Bombay bar as well. The connect is optional and can be closed when necessary.

# ADDITIONAL SPACES

---

THESE SPACES SIT IN CONJUNCTION WITH THE CORE ONES AND COMPLETE IFBE.



# 04

THE SPACES

## THE COURTYARD

These spaces sit in conjunction with the core ones and complete IFBE.

These spaces sit in conjunction with the core ones and complete IFBE.

The open courtyard is a feature of most traditional Indian dwellings. All paths at IFBE converge at the Courtyard, which is home to a magnificent banyan tree that provided the spark of inspiration to birth this project. First-time and regular visitors alike gravitate to this banyan tree to absorb and enjoy the nurturing, healing, and creative energies it exudes.



# 05

THE SPACES

## THE BANYAN TREE CAFE

This laidback eatery is situated on the ground floor and is committed to wholesome and healthy eating with a menu of salads, sandwiches, and smoothies. The perfect spot for a catch-up with friends before or after a performance.

**Seats:** About 32 Interior 20 Exterior



# 06

THE SPACES

## NATIVE BOMBAY RESTAURANT

With exposed brickwork and vintage Burma teak, Native Bombay restaurant and bar offers a contemporary spin on regional Indian cuisine.

Seats: About 90 people



# 07

## **NATIVE BOMBAY BAR & LOUNGE**

A wooden bar complete with a wooden campari casket, Native Bar is a negroni bar with a charming agrestic appeal.

Area: 861.12 sq ft

Seats: About 30 people

# Where Culinary Art Meets Experiential Design

Soulinaire is a luxury experiential catering atelier offering bespoke, location-agnostic gourmet experiences honed over Indian Hotels Company Limited's 123 years of culinary mastery.

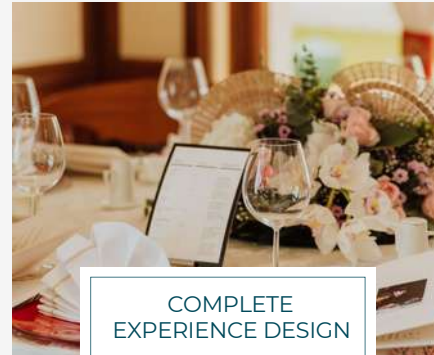
Leading the entire experience design - from course flow and service style to live counters, signature elements, and pairings - **Soulinaire, in collaboration with IFBE Mumbai,** creates immersive events where avant-garde cuisine meets soulful storytelling.

CULINARY EXPERIENCES


# SOULINAIRE



**BESPOKE MENU CURATION**  
Tailor-made menus inspired by IHCL's iconic culinary repertoire and crafted to suit the theme, destination, and palate of each event.



**COMPLETE EXPERIENCE DESIGN**  
Design and orchestration of the entire culinary journey - including flow of courses, sequencing, pacing, and experiential elements.



**SIGNATURE SERVICE STYLES**  
Refined service experiences ranging from plated fine dining and butler-led service to interactive culinary theatre.



**LIVE CULINARY COUNTERS**  
Chef-led live stations featuring artisanal techniques, fresh cooking, and specialty cuisines presented with artistic flair.



**BEVERAGE & PAIRING PROGRAMMES**  
Expert-led beverage profiling, mixology, and curated pairings to enhance each course and elevate flavour.



**SIGNATURE CULINARY ELEMENTS**  
Exclusive dishes, specialty preparations, handcrafted accents, and elevated details unique to Soulinaire.



**THEME & CONCEPT INTEGRATION**  
Seamless alignment of culinary expression with wedding themes, corporate identities, fashion showcases, cultural events, or brand storytelling.



**END-TO-END EXECUTION**  
From pre-planning and design to on-ground execution, Soulinaire ensures flawless delivery with IHCL's hallmark hospitality.



GASTRONOMY,  
ARTISTRY, LEGACY.

PERFECTLY  
ORCHESTRATED.

**IF.**  
**BE** Architecture  
Design  
The Arts

ONE PLACE  
THREE SPACES  
ENDLESS POSSIBILITIES

CULINARY EXPERIENCES  
**SOULINAIRE**

## Reach Us

IFBE | Soulinaire (Culinary Experiences),  
10-12, Calicut Street,  
Ballard Estate, Fort,  
Mumbai, MH - 400001

## Opening Times

10:00 AM to 7:00 PM

## Contact Us

For further information, please connect with us at  
[info@ifbe.space](mailto:info@ifbe.space)  
[contactus@soulinaire.com](mailto:contactus@soulinaire.com)

